

Special Packages 2026

Starting from:

4 weeks : €1,268

8 weeks : €2,236

12 weeks : €3,314

24 weeks : €6,074

ALL INCLUSIVE



CAMPUS RESTAURANT



24/7 CUSTOMER CARE



CAMPUS POOL



CAMPUS ACCOMMODATION



CLASSES



CAMPUS FITNESS CENTRE



CAMPUS GAMES LOUNGE



CAMPUS SOUVENIR SHOP

PACKAGES WITH GENERAL ENGLISH STANDARD (20 LESSONS / 15 HOURS PER WEEK)

TOTAL WEEKS	SHARING BEDROOM – 3 OR 4* STUDENTS IN A ROOM						TWIN BEDROOM - 2 STUDENTS IN A ROOM								SINGLE BEDROOM – 1 STUDENT IN A ROOM / APARTMENT				
	SH*	SIDRA Apt*	KR en-suite	GV 2 Brm	AMBER Court	GV 1 Brm	SH	SIDRA Apt	KR en-suite	GV 2 Brm	AMBER Court	SAS/SUN 2 Brm	GV 1 Brm	SAS 1 Brm	GV 2 Brm	AMBER Court	SAS/SUN 2 Brm	GV 1 Brm	SAS 1 Brm
1	355	362	369	376	383	397	383	390	404	425	425	432	446	453	544	544	558	579	600
2	659	673	687	701	715	743	715	729	757	799	799	813	841	855	1,037	1,037	1,065	1,107	1,149
3	964	985	1,006	1,027	1,048	1,090	1,048	1,069	1,111	1,174	1,174	1,195	1,237	1,258	1,531	1,531	1,573	1,636	1,699
4	1,268	1,296	1,324	1,352	1,380	1,436	1,380	1,408	1,464	1,548	1,548	1,576	1,632	1,660	2,024	2,024	2,080	2,164	2,248
5	1,573	1,608	1,643	1,678	1,713	1,783	1,713	1,748	1,818	1,923	1,923	1,958	2,028	2,063	2,518	2,518	2,588	2,693	2,798
6	1,877	1,919	1,961	2,003	2,045	2,129	2,045	2,087	2,171	2,297	2,297	2,339	2,423	2,465	3,011	3,011	3,095	3,221	3,347
7	2,182	2,231	2,280	2,329	2,378	2,476	2,378	2,427	2,525	2,672	2,672	2,721	2,819	2,868	3,505	3,505	3,603	3,750	3,897
8	2,236	2,292	2,348	2,404	2,460	2,572	2,348	2,404	2,516	2,684	2,684	2,740	2,852	2,908	3,580	3,580	3,692	3,860	4,028
9	2,506	2,569	2,632	2,695	2,758	2,884	2,632	2,695	2,821	3,010	3,010	3,073	3,199	3,262	4,018	4,018	4,144	4,333	4,522
10	2,775	2,845	2,915	2,985	3,055	3,195	2,915	2,985	3,125	3,335	3,335	3,405	3,545	3,615	4,455	4,455	4,595	4,805	5,015
11	3,045	3,122	3,199	3,276	3,353	3,507	3,199	3,276	3,430	3,661	3,661	3,738	3,892	3,969	4,893	4,893	5,047	5,278	5,509
12	3,314	3,398	3,482	3,566	3,650	3,818	3,482	3,566	3,734	3,986	3,986	4,070	4,238	4,322	5,330	5,330	5,498	5,750	6,002
13	3,584	3,675	3,766	3,857	3,948	4,130	3,766	3,857	4,039	4,312	4,312	4,403	4,585	4,676	5,768	5,768	5,950	6,223	6,496
14	3,853	3,951	4,049	4,147	4,245	4,441	4,049	4,147	4,343	4,637	4,637	4,735	4,931	5,029	6,205	6,205	6,401	6,695	6,989
15	4,123	4,228	4,333	4,438	4,543	4,753	4,333	4,438	4,648	4,963	4,963	5,068	5,278	5,383	6,643	6,643	6,853	7,168	7,483
16	4,392	4,504	4,616	4,728	4,840	5,064	4,616	4,728	4,952	5,288	5,288	5,400	5,624	5,736	7,080	7,080	7,304	7,640	7,976
17	4,662	4,781	4,900	5,019	5,138	5,376	4,900	5,019	5,257	5,614	5,614	5,733	5,971	6,090	7,518	7,518	7,756	8,113	8,470
18	4,931	5,057	5,183	5,309	5,435	5,687	5,183	5,309	5,561	5,939	5,939	6,065	6,317	6,443	7,955	7,955	8,207	8,585	8,963
19	5,201	5,334	5,467	5,600	5,733	5,999	5,467	5,600	5,866	6,265	6,265	6,398	6,664	6,797	8,393	8,393	8,659	9,058	9,457
20	5,470	5,610	5,750	5,890	6,030	6,310	5,750	5,890	6,170	6,590	6,590	6,730	7,010	7,150	8,830	8,830	9,110	9,530	9,950
21	5,740	5,887	6,034	6,181	6,328	6,622	6,034	6,181	6,475	6,916	6,916	7,063	7,357	7,504	9,268	9,268	9,562	10,003	10,444
22	6,009	6,163	6,317	6,471	6,625	6,933	6,317	6,471	6,779	7,241	7,241	7,395	7,703	7,857	9,705	9,705	10,013	10,475	10,937
23	6,279	6,440	6,601	6,762	6,923	7,245	6,601	6,762	7,084	7,567	7,567	7,728	8,050	8,211	10,143	10,143	10,465	10,948	11,431
24	6,074	6,242	6,410	6,578	6,746	7,082	6,074	6,242	6,578	7,082	7,082	7,250	7,586	7,754	9,602	9,602	9,938	10,442	10,946
25	6,323	6,498	6,673	6,848	7,023	7,373	6,323	6,498	6,848	7,373	7,373	7,548	7,898	8,073	9,998	9,998	10,348	10,873	11,398
26	6,571	6,753	6,935	7,117	7,299	7,663	6,571	6,753	7,117	7,663	7,663	7,845	8,209	8,391	10,393	10,393	10,757	11,303	11,849
27	6,820	7,009	7,198	7,387	7,576	7,954	6,820	7,009	7,387	7,954	7,954	8,143	8,521	8,710	10,789	10,789	11,167	11,734	12,301
28	7,068	7,264	7,460	7,656	7,852	8,244	7,068	7,264	7,656	8,244	8,244	8,440	8,832	9,028	11,184	11,184	11,576	12,164	12,752
29	7,317	7,520	7,723	7,926	8,129	8,535	7,317	7,520	7,926	8,535	8,535	8,738	9,144	9,347	11,580	11,580	11,986	12,595	13,204
30	7,565	7,775	7,985	8,195	8,405	8,825	7,565	7,775	8,195	8,825	8,825	9,035	9,455	9,665	11,975	11,975	12,395	13,025	13,655
31	7,814	8,031	8,248	8,465	8,682	9,116	7,814	8,031	8,465	9,116	9,116	9,333	9,767	9,984	12,371	12,371	12,805	13,456	14,107
32	8,062	8,286	8,510	8,734	8,958	9,406	8,062	8,286	8,734	9,406	9,406	9,630	10,078	10,302	12,766	12,766	13,214	13,886	14,558
33	8,311	8,542	8,773	9,004	9,235	9,697	8,311	8,542	9,004	9,697	9,697	9,928	10,390	10,621	13,162	13,162	13,624	14,317	15,010
34	8,559	8,797	9,035	9,273	9,511	9,987	8,559	8,797	9,273	9,987	9,987	10,225	10,701	10,939	13,557	13,557	14,033	14,747	15,461
35	8,808	9,053	9,298	9,543	9,788	10,278	8,808	9,053	9,543	10,278	10,278	10,523	11,013	11,258	13,953	13,953	14,443	15,178	15,913
36	9,056	9,308	9,560	9,812	10,064	10,568	9,056	9,308	9,812	10,568	10,568	10,820	11,324	11,576	14,348	14,348	14,852	15,608	16,364
37	9,305	9,564	9,823	10,082	10,341	10,859	9,305	9,564	10,082	10,859	10,859	11,118	11,636	11,895	14,744	14,744	15,262	16,039	16,816
38	9,553	9,819	10,085	10,351	10,617	11,149	9,553	9,819	10,351	11,149	11,149	11,415	11,947	12,213	15,139	15,139	15,671	16,469	17,267
39	9,802	10,075	10,348	10,621	10,894	11,440	9,802	10,075	10,621	11,440	11,440	11,713	12,259	12,532	15,535	15,535	16,081	16,900	17,719
40	10,050	10,330	10,610	10,890	11,170	11,730	10,050	10,330	10,890	11,730	11,730	12,010	12,570	12,850	15,930	15,930	16,490	17,330	18,170
41	10,299	10,586	10,873	11,160	11,447	12,021	10,299	10,586	11,160	12,021	12,021	12,308	12,882	13,169	16,326	16,326	16,900	17,761	18,622
42	10,547	10,841	11,135	11,429	11,723	12,311	10,547	10,841	11,429	12,311	12,311	12,605	13,193	13,487	16,721	16,721	17,309	18,191	19,073
43	10,796	11,097	11,398	11,699	12,000	12,602	10,796	11,097	11,699	12,602	12,602	12,903	13,505	13,806	17,117	17,117	17,719	18,622	19,525
44	11,044	11,352	11,660	11,968	12,276	12,892	11,044	11,352	11,968	12,892	12,892	13,200	13,816	14,124	17,512	17,512	18,128	19,052	19,976
45	11,293	11,608	11,923	12,238	12,553	13,183	11,293	11,608	12,238	13,183	13,183	13,498	14,128	14,443	17,908	17,908	18,538	19,483	20,428
46	11,541	11,863	12,185	12,507	12,829	13,473	11,541	11,863	12,507	13,473	13,473	13,795	14,439	14,761	18,303	18,303	18,947	19,913	20,879
47	11,790	12,119	12,448	12,777	13,106	13,764	11,790	12,119	12,777	13,764	13,764	14,093	14,751	15,080	18,699	18,699	19,357	20,344	21,331
48	12,038	12,374	12,710	13,046	13,382	14,054	12,038	12,374	13,046	14,054	14,054	14,390	15,062	15,398	19,094	19,094	19,766	20,774	21,782

SH = Student House • SIDRA Apt = Sidra Apartments • KR en-suite = Kavalieri Rooms en-suite • GV 2 Brm = Garden View Two Bedroom Apartment • GV 1 Brm = Garden View One Bedroom Apartment • SAS/SUN 2 Brm = St. Andrew's Two Bedroom Suite / Sunshine Court Two Bedroom Suite • SAS 1 Brm = St. Andrew's One Bedroom Suite

INCLUDED IN THE FEES

- General English – Standard (20 lessons / 15 hours per week)
- Accommodation on self-catering as booked
- Course Resource Fee
- Arrival Airport Transfer*
- Clubclass Course Certificate
- Oxford Quality Centre Certificate
- Use of Outdoor Pool and Fitness Centre
- * Departure Airport Transfer - €31

OXFORD
QUALITY

Oxford Online Skills Programme:

- All our students get access to the Oxford Online Skills Programme, which is an excellent tool to practice and improve upon their listening, speaking, reading and writing skills.
- Access to this program is valid for 18 months from the date of activation.

ALSO INCLUDED

- Oxford Online Practice (valid for 18 months)
- Orientation Walk
- Welcome Meeting
- Placement Test
- One Course Book
- Free Wi-Fi
- Student Bag
- Student Discount Card
- Local SIM (on request)
- Weekly tutorials (8 weeks +)
- Academic Counselling
- Student Library
- 24/7 Customer Care Assistance
- Games Lounge / Remote Work Area

SUPPLEMENTS

HIGH SEASON — 14.06.2026 – 22.08.2026

A supplement of €84 per week on Course and €84 per week on accommodation is applicable to bookings of 1 to 7 weeks. No supplement is due for 8-week bookings or longer.

To upgrade from General English Standard to General English Standard + English For Work (evening classes) - €42 per week.

To upgrade from General English Standard to General English Standard + Fluency (afternoon classes) - €49 per week.

Specific Lessons time supplement - €50 per week.

CATERING OPTIONS

at Three Black Sheep Restaurant in the complex

Continental Breakfast

€70 per week (for 7 breakfasts)

Packed Lunch

€70 per week (for 7 lunches)

Hot Lunch

€84 per week (for 7 lunches)

Dinner Three Course

€133 per week (for 7 dinners – meal includes beverage)

Special Diet Supplement (per week)

€21 Breakfast | €14 Packed / Hot lunch | €21 Dinner

[VIEW
SAMPLE MENU](#)



TECH-DRIVEN LEARNING



STUDY BREAK AT THE RESTAURANT



RELAX BY THE POOL

COURSE ONLY

1-23 weeks: €165 per week

24 weeks+: €145 per week

To upgrade from General English Standard to General English Standard + English For Work (evening classes): €60 per week

To upgrade from General English Standard to General English Standard + Fluency (afternoon classes): €70 per week

COURSE RESOURCE FEE

(One-time Course Resource Fee compulsory and non-refundable)

1-7 weeks : €50

8-23 weeks : €80

24 weeks + : €110



DAILY ACTIVITY PROGRAMME



TRAIN TOGETHER AT THE FULLY EQUIPPED FITNESS CENTRE

ACCOMMODATION INFORMATION

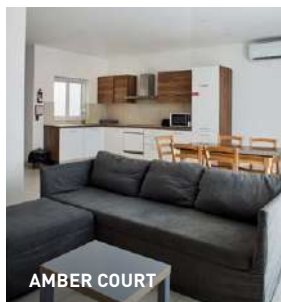
- Only nationality in the room (subject to availability) €70 per week.
- Check-in on the day of arrival is at 14:00. An earlier check-in at an additional fee is possible, subject to availability.
- Check-out on the day of departure is at 10:00. A later check-out at an additional fee is possible, subject to availability.
- Travel Insurance €20 per week (minimum two weeks).
- A safety deposit box can be rented at the school reception upon request at €10.
- A locker key can be rented at the Campus Customer Care Desk for both Student Houses and Kavalieri Rooms en-suite against a refundable deposit of €10.
- When booking a single room, a guest may invite a friend or a family member at an additional fee of €30 per night per guest.
- Launderette available on campus: €6 wash / €4 dry.

All prices are inclusive of the applicable VAT rates in Malta and any other taxes or charges. ECO TAX is not included. ECO TAX is applicable to all students aged 18 and over. €0.50 per night, capped at a maximum of €5 per visit. A refundable damage deposit of €100 will be collected from each student on arrival.

Prices may change if there are revisions in governmental policy, fuel or tax increases, or other unforeseen events beyond the school's control.



ST. ANDREWS SUITES



AMBER COURT



SUNSHINE COURT



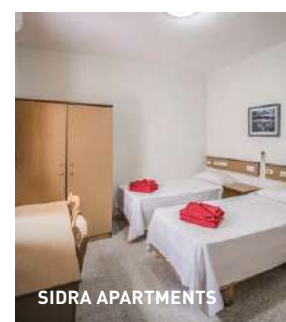
GARDEN VIEW APARTMENTS



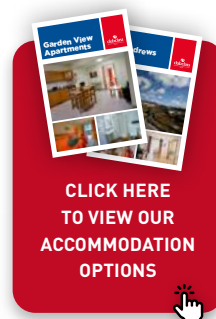
KAVALIERI ROOMS EN-SUITE



STUDENT HOUSE



SIDRA APARTMENTS



ACCOMMODATION

✓ AVAILABLE

A ACROSS THE ROAD FROM THE SCHOOL

I IN THE SAME BUILDING AS THE SCHOOL

W WITHIN WALKING DISTANCE OF THE SCHOOL

SLIEMA

€ AT A CHARGE (PAID LOCALLY)

P PRIVATE

S SHARED (IN THE ACCOMMODATION)

⌚ AT PRESET TIMES

	SHARED	TRIPLE	TWIN	SINGLE	NO. OF BEDROOMS	WI-FI	TV	KITCHEN	BATHROOM	AIR-CONDITIONING IN BEDROOM	AIR-CONDITIONING IN COMMON AREA	FAN	LOCATION
St. Andrews Suites – One Bedroom			✓	✓	1	✓	P	P	P	⌚	⌚		A
Garden View – One Bedroom Apartment		✓	✓	✓	1	✓	P	P	P	⌚			I
St. Andrews Suites – Two Bedroom Apartment			✓	✓	2	✓	S	S	1	⌚	⌚		A
Sunshine Court – Two Bedroom Suite			✓	✓	2	✓	S	S	2	24/7	24/7		SLIEMA
Garden View – Two Bedroom Apartment		✓	✓	✓	2	✓	S	S	1/2	⌚			I
Amber Court		✓	✓	✓	2/3	✓	S	S	S	⌚	⌚		A
Kavalieri Rooms en-suite		✓	✓		15	✓	P	S	P	€	⌚	✓	A
Sidra Apartments	✓	✓	✓		3/4	✓	S	S	S	⌚		✓	A
Student House	✓	✓	✓		10	✓		S	S		⌚	✓	A
Host Family	✓	✓	✓	✓		✓	S		S			✓	W

COOLING AND HEATING

Air-conditioning / heating in St. Andrews Suites, Garden View Apartments, Amber Court and Sidra Apartments functions at preset times between 22:00 and 08:00 in summer and between 16:00 and 23:00 in winter.

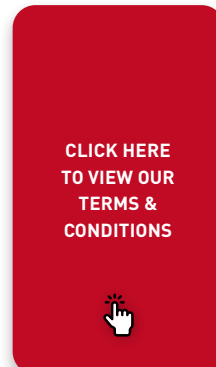
Students can pay an extra €3 per unit per day so that the air-conditioning / heating operates on a 24-hours basis.

Air-conditioning / heating in Kavalieri Rooms en-suite available at a charge.

Students can pay €6 per unit per day so that the air-conditioning / heating operates on a 24-hours basis.

Air-conditioning / heating in Student House common area functions at preset times between 22:00 and 08:00 in summer and between 16:00 and 23:00 in winter.

If students require a heater or a fan, this can be hired from the Campus Customer Care Desk at a cost of €3 per day. Use of heaters or fans other than those supplied by the reception is not allowed. In the event of a heater or fan being found in the accommodation, a charge of €6 per day for the full stay will be made for each heater / fan. In the case of host family accommodation a heater/fan will be provided when necessary.



TOP 10 REASONS TO CHOOSE CLUBCLASS CAMPUS

- 01** We are an accredited school, very close to Malta's touristic hub.
- 02** We are a residential campus with an array of facilities under one roof. We also offer accommodation to suit various budgets.
**Wifi is available in all areas.*
- 03** All Classrooms are equipped with the latest Smart Board Technology.
- 04** Over the years we have hosted students from over 50 different countries. Our rich nationality mix will encourage you to speak English in and out of the classroom.
- 05** We offer 24/7 Assistance face-to-face or through our 24/7 WhatsApp and Call lines.
- 06** We are the only Oxford Quality approved centre in Malta. The Oxford Quality Programme is an agreement between Oxford University Press and selected schools worldwide who share a commitment to excellence in the teaching of English.
- 07** Students have free access to our large outdoor swimming pool on our campus. *(Open between May and October).*
- 08** Students can also make use of our on-campus fully equipped fitness centre – Think Fitness – all year round.
- 09** Three Black Sheep Restaurant is situated right next to the campus.
- 10** Our Little Elephants Child Care Centre is also located right next to the school. *(Ages 0-3 years old).*



Connect with us



CLUBCLASS MALTA LTD.

104, Triq is Sidra, Swieqi, St. Julian's, SWQ 3150, Malta

tel: +356 2377 1000

email: info@clubclass.com

web: www.clubclass.com

VAT No MT 2830-6135

Company Registration No - C68252

clubclass
ENGLISH LANGUAGE SCHOOL
MALTA

**Malta's Real Language Campus.
One Place. Many Experiences.**